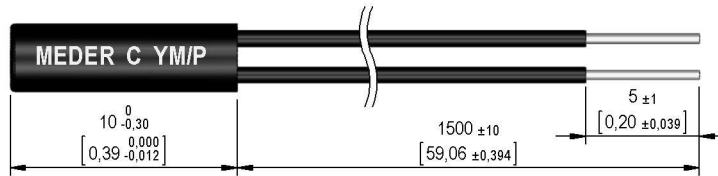
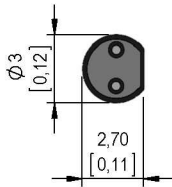


**Dimensions mm[inch]**  
 tolerances acc. to DIN ISO 2768-m  
 Toleranzen gem. DIN ISO 2768-m

**Isometric**  
 Scale 1:1  
 Maßstab 1:1



**Cable**

PVC single wire AWG30, 105°C, 30V  
 UL-Style 1685 or 1692  
 colour of wires: black  
 PVC Einzellitzen AWG30, 105°C, 30V  
 UL-Style 1685 oder 1692  
 Aderfarben: schwarz

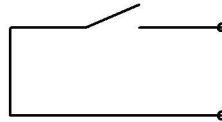
**Terminals/Connector**

Ends tinned  
 Enden verzinkt

**ATTENTION!**

mechanically stress not allowed.  
 Sensorgehäuse darf nicht  
 mechanisch belastet werden.

**Schematic**



**Marking**

according to EN60062/factory code  
 gem. EN60062/Fertigungsstätte



Magnetic properties	Conditions	Min	Typ	Max	Unit
Pull-In	at 20°C	60		80	AT
Test equipment		KMS-11 + AP113			

Special Product Data	Conditions	Min	Typ	Max	Unit
Contact - No.		80			
Contact - form		A - NO			
Contact rating	Any DC combination of V & A not to exceed their individual max.'s			10	W
Switching voltage	DC or Peak AC			30	V
Carry current	DC or Peak AC			0,5	A
Switching current	DC or Peak AC			0,5	A
Sensor-resistance	measured with 40% overdrive			1.160	mOhm
Housing material		PBT 30%GF			
Case colour		black			
Sealing compound		Polyurethan			
Reach / RoHS conformity		yes			

Environmental data	Conditions	Min	Typ	Max	Unit
Shock	1/2 sine, duration 11ms, in 3 axis			50	g
Vibration	from 10 - 2000 Hz			20	g
Operating temperature	cable not moved	-30		70	°C
Operating temperature	cable moved	-5		70	°C
Storage temperature		-30		70	°C

General data	Conditions	Min	Typ	Max	Unit
Mounting advice		over 5m cable, a resistor is recommended.			
Total weight			2,66		g