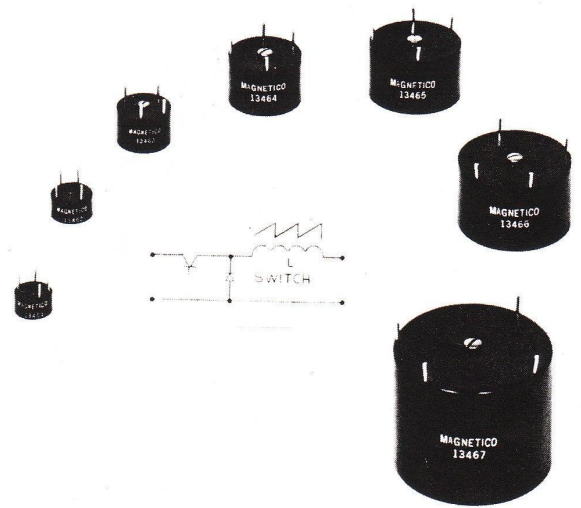
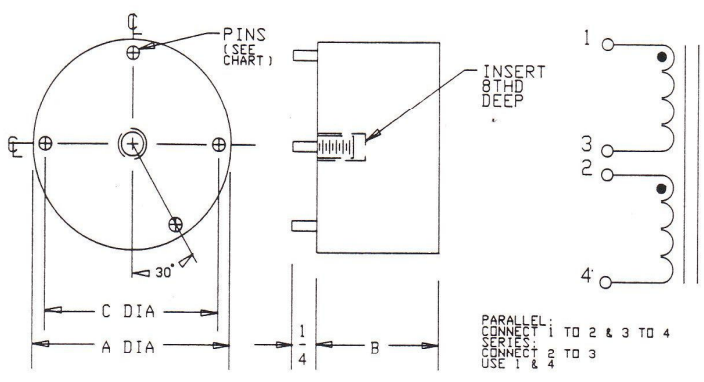


# SWITCHING INDUCTORS



PART NO.	"A"	"B"	"C"	PINS	INSERT
MG13461XX	5/8	5/16	.500	.032	NONE
MG13462XX	3/4	3/8	.625	CCS	NONE
MG13463XX	1	5/8	.875		NONE
MG13464XX	1 3/8	7/8	1.250	.040	4-40
MG13465XX	1 3/4	1	1.625	CCS	6-32
MG13466XX	2	1 1/8	1.875		6-32
MG13467XX	2 1/2	1 1/4	2.375		6-32

PART NO.	PARALLEL CONNECTION				SERIES CONNECTION			
	INDUCT ±8% @0.1V/KC	RES. OHMS	DC AMPS @90% INDUCTANCE	SFE OPERATING CURRENT	INDUCT ±8% @0.1V/KC	RES. OHMS	DC AMPS @90% INDUCTANCE	SAFE OPERATING CURRENT
MG13461-010	10 μH	.015	2.50	2.5 +	40 μH	.060	1.25	1.25 +
-040	40 μH	.050	1.25	1.5 +	160 μH	1.00	.625	.60 +
-100	100 μH	.075	0.83	1.0*	400 μH	0.30	.415	.5*
MG13462-100	100 μH	.050	1.00	2.0#	400 μH	0.20	.50	1.0 +
MG13463-010	10 μH	.005	4.65	17.0*	40 μH	.020	2.325	8.5*
-040	40 μH	.012	2.40	8.2*	160 μH	.045	1.20	4.1*
-100	100 μH	.030	1.50	5.0*	400 μH	0.12	.75	2.5*
-200	200 μH	.070	1.00	1.0 +	800 μH	0.26	.50	.5 +
-500	500 μH	0.14	.067	1.0#	2 MH	0.56	.335	.5#
-1 K	1 MH	0.25	.048	1.0#	4 MH	1.00	.24	.5#
MG13464-040	40 μH	.010	5.40	20.0*	160 μH	.040	2.7	10.0*
-100	100 μH	.010	3.40	10.0*	400 μH	.040	1.7	5.0*
-2 K	2 MH	0.30	0.51	1.0#	8 MH	1.30	.225	.5#
-5 K	5 MH	0.65	0.34	1.0*	20 MH	2.50	.17	.5*
MG13465-200	200 μH	.020	2.75	10.0*	800 μH	.080	1.375	5.0*
-1 K	1 MH	.007	1.25	5.0*	4 MH	.028	.625	2.5*
-5 K	5 MH	0.36	0.55	2.0*	20 MH	1.50	.275	1.0*
MG13466-040	40 μH	.003	8.40	30.0*	160 μH	.012	4.20	15.0*
-100	100 μH		5.60	20.0*	400 μH		2.80	10.0*
-2 K	2 MH	.090	1.22	5.0*	8 MH	0.36	.61	2.5*
MG13467-100	100 μH	.004	8.00	30.0*	400 μH	.016	4.00	15.0*
-200	200 μH	.009	4.10	20.0*	800 μH	.036	2.05	10.0*
-500	500 μH	.015	1.10	4.0*	2 MH	.060	.55	2.0*

\*50% INDUCTANCE    +90% INDUCTANCE    #75% INDUCTANCE