

# TA-TAE-FPT Series

## Open - Enclosed - Toroid

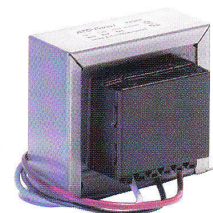
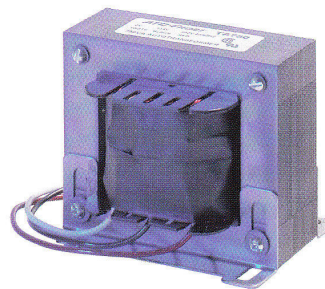
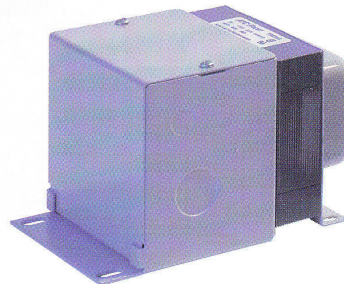
### Autotransformers

#### Application:

An autotransformer, due to its shared winding method of construction, is an economical means of changing voltage levels. They are widely used to operate electrical equipment in other countries. However, care must be taken to ensure the connected equipment is properly grounded and is capable of operating at 50Hz or 60Hz if necessary.

#### Features:

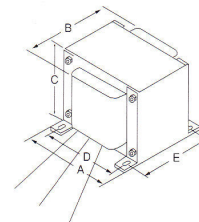
- Typically 50% smaller than an equivalent isolation type transformer.
- All models are 50/60Hz rated. 230V-115V or 115V-230V.
- Laminated units are varnish impregnated and baked for quiet operation.
- Convenient 8"-10" leads are standard. Custom terminations are available.
- CSA and UL recognized component transformers are indicated. LR16597, E105782.
- Toroid models come complete with mounting hardware.
- Class B-130°C Insulation system utilized.
- All units are dielectric tested to CSA/UL standards.



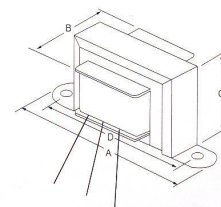
#### TA Open

#### 115-230 Volt or 230-115 Volt 50/60Hz

Cat. No.	VA	Style	A	B	C	D	E	CSA	UL
TA 50	50	HA	3.69	2.20	2.25	3.13		X	X
TA 100	100	HA	4.00	2.50	2.56	3.56		X	X
TA 200	200	HA	4.50	2.60	2.88	4.00		X	X
TA 300	300	B	3.75	3.00	3.13	3.13	2.40	X	X
TA 400	400	B	3.75	3.75	3.13	3.13	3.20	X	X
TA 500	500	B	4.50	3.25	3.75	3.75	2.50	X	X
TA 750	750	B	4.50	3.75	3.75	3.75	3.00	X	X
TA 1000	1000	B	4.50	4.75	3.75	3.75	4.00	X	X
TA 2000	2000	B	5.25	5.75	4.38	4.38	4.13	X	X



'B' Bracket

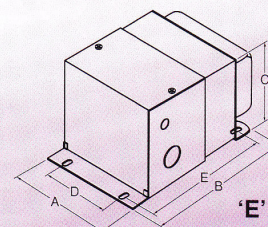


'HA' Frame

#### TAE Enclosed

#### 115-230 Volt or 230-115 Volt 50/60Hz

Cat. No.	VA	Style	A	B	C	D	E	CSA	UL
TAE 300	300	E	3.88	6.00	3.50	3.20	4.75	X	X
TAE 400	400	E	3.88	6.75	3.50	3.20	5.50	X	X
TAE 500	500	E	4.50	6.80	4.20	3.75	5.22	X	X
TAE 750	750	E	4.50	7.30	4.20	3.75	5.72	X	X
TAE 1000	1000	E	4.50	8.30	4.20	3.75	6.72	X	X
TAE 2000	2000	E	4.40	9.50	5.30	3.50	8.30	X	



'E' Enclosed