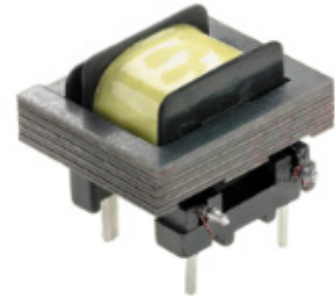


# CSB Series – 50 - 400 Hz Current Sense Transformers



- Features: 1 - 20 Amp current transformers, integrated primary winding for simple connection to PCB mount package, varnish impregnated to reduce audible noise, primary to secondary isolation tested at 2,500vrms, robust bobbin construction meets UL94 V-0
- Applications: Over-current sensing, isolated-current indicators, load variation sensing, proportional current feedback
- Markets: Automated Insertion Equipment, etc.

Part Description: **CSB470680**

Series	Size (20A)	Core Material	Current Ratio
CSB	4	7	680, 1,000, 1,500, 2,500 Can be customized in the same package

Customer Options (Electrical Data 25 °C)					
CSB Model	CSB470680	CSB471000	CSB471500	CSB472500	Unit
<b>Current Ratio</b> Primary to sense	680:1	1000:1	1500:1	2500:1	
<b>Typical Output</b> (Secondary Load Resistor)	10 – 100 (6.8 Ω - 68 Ω)	10 – 100 (10 Ω - 100 Ω)	10 – 100 (15 Ω - 150 Ω)	10 – 100 (25 Ω - 250 Ω)	mV/A
<b>Accuracy</b> Standard Load - tested at 10 mv output per 1 amp input from 1 to 20 amps at 60 Hz	± 2%	± 2%	± 2%	± 2%	Core 7
<b>Output Voltage 60Hz (max.)</b> Rated for 20 amp input	2.2	3.2	4.7	7.9	Vrms
<b>DC Resistance (DCR) (max.)</b>	4.5				mΩ
Primary	29	50	120	369	Ω
Secondary					
<b>Hi-Pot</b> From 1 to 4, Core / From 4 to Core	2,500/300	2,500/300	2,500/300	2,500/300	Vrms
<b>Operating Temperature</b>	-40 to 125	-40 to 125	-40 to 125	-40 to 125	°C

Dimensional Drawing – Tolerance when unspecified 2 decimal places 0.02, 3 decimal places 0.010

